



COMMONWEALTH LNG

A Caturus Company



A World-Class LNG Facility

A 9.5 Mtpa LNG export terminal on the U.S. Gulf Coast near Cameron, Louisiana

Commonwealth LNG is built on robust engineering principles and a modular construction strategy designed to minimize risk and ensure cost and schedule certainty for all stakeholders

Facility Overview

Construction of the 9.5 Mtpa LNG export facility will involve a \$12.5 billion total capital investment. The completed project is expected to contribute more than \$3 billion per year in U.S. export revenue.

We will be creating more than 2,000 construction jobs at peak activity and 300 high-paying full-time jobs when operations begin.

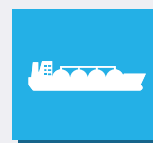
The project will also enhance local economic opportunities by utilizing area businesses to service our plant when possible.



Committed to developing strategic partnerships by working collaboratively with local communities



Commonwealth's design uses cutting-edge technology to reduce emissions



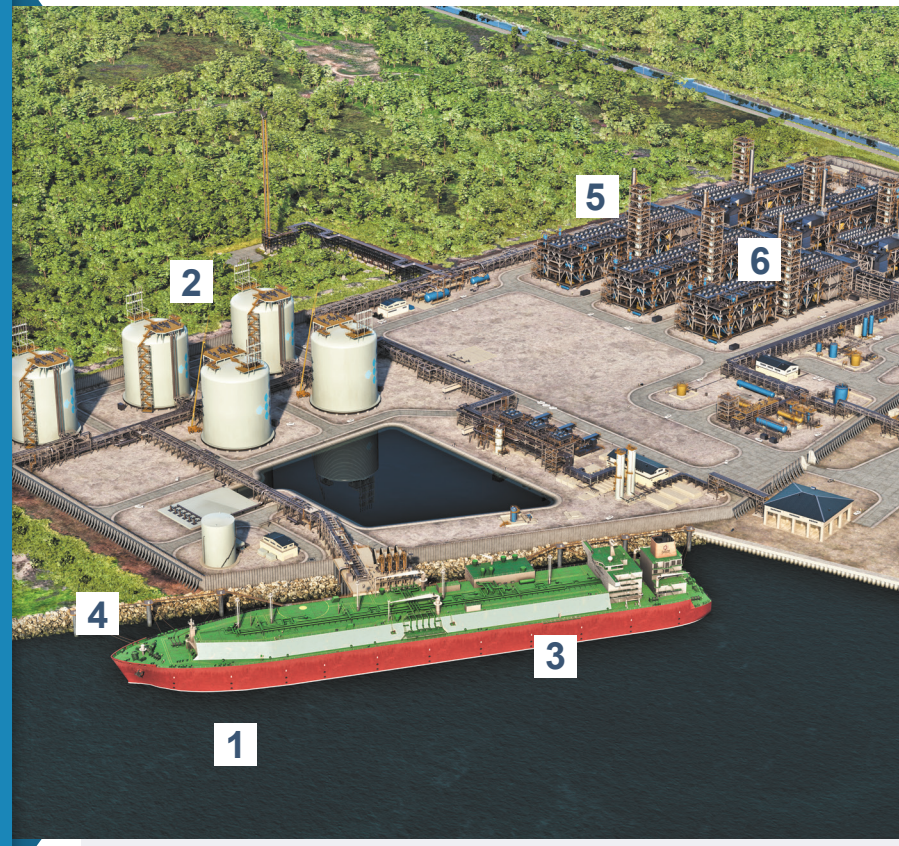
Commonwealth will deliver competitively priced LNG to European and Asian markets utilizing responsibly sourced gas

Why Commonwealth LNG?

The facility will serve as a vital link between abundant American natural gas resources and international markets, all while delivering cleaner, more reliable, and affordable energy.

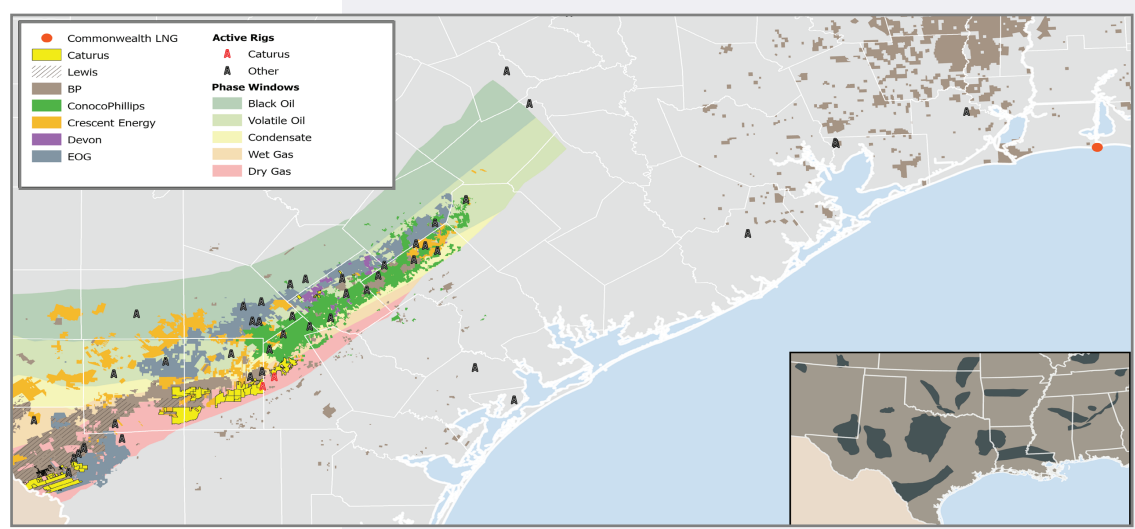
Commonwealth LNG Export Facility

- 1 Coastal LNG Cargo Access:** Ideal location at the mouth of the Calcasieu Ship Channel
- 2 Storage:** 250,000 m³
- 3 Berth:** Accommodates vessels up to 216,000 m³
- 4 Hurricane Mitigation:** 35-ft Storm Protection Wall
- 5 Fully Modularized:** Modular design minimizes exposure to construction labor risk and EPC contractor concentration risk
- 6 Power Supply:** Highly reliable self-generation



Location Overview

Caturus is building America's leading independent integrated natural gas company that includes Commonwealth LNG, delivering responsibly sourced low-emission fuel to international markets.



LNG Construction Timeline

Final Investment Decision (FID) 2026

Construction Phase ~4 Yr Build

First LNG 2030